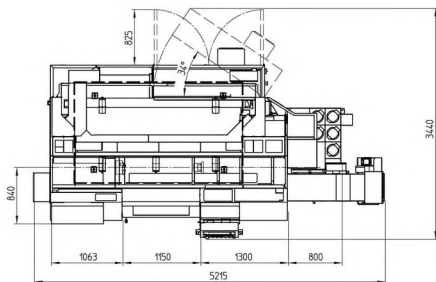
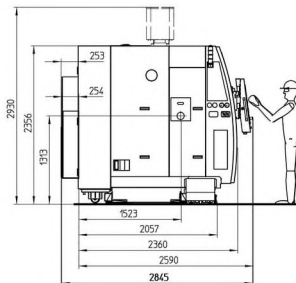
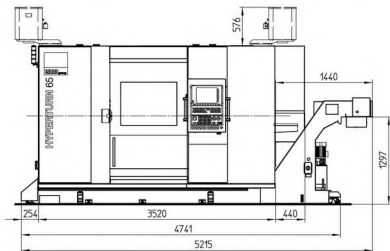
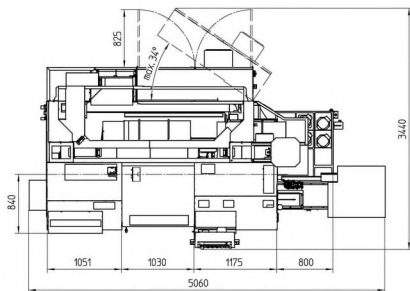
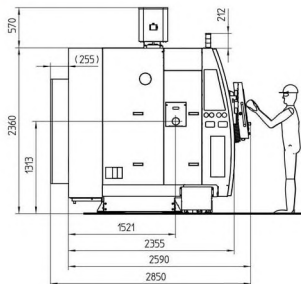
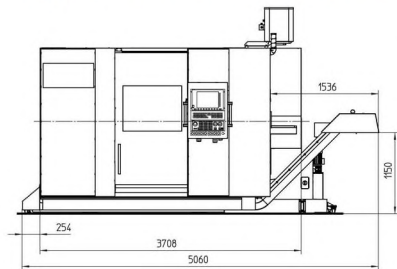


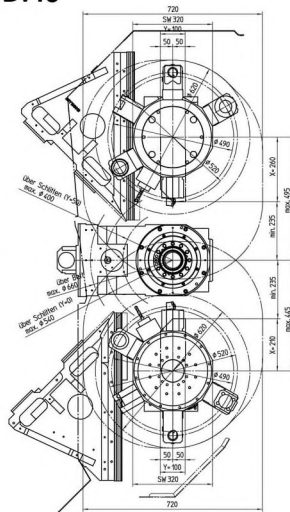
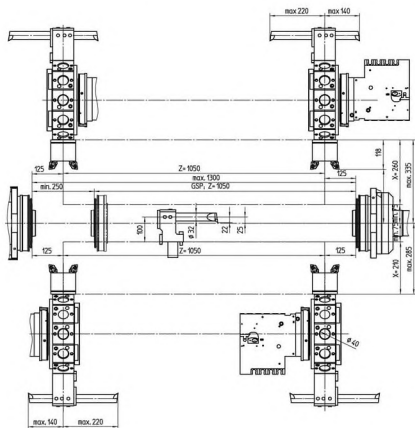
Габаритные размеры станков HyperTurn 65 1300 TRIPLE TURN и DUOTURN



Габаритные размеры станка HyperTurn 65 DUOTURN 1000



Габаритные размеры станка HyperTurn 65 DUOTURN 1300 VDI40



Габаритные размеры станка HyperTurn 65 Triple Turn VDI40

